

Products**Scanlift products**[SL 185](#)[SL 190](#)[SL 240](#)[Back](#)**Scanlift Products**

Scanlift product range consists of SL 185 and SL 190 with 18,5 m working height and SL 240 with 24,0 m working height. In the year 2001 there will be also introduced the SL 320 with 32,0 m working height. Scanlift Access Platforms are developed especially for rental and industrial use. They are highly mobile and easy to operate, flexible, versatile and efficient in use. Scanlift machines are also safe to move and use.

Products[Scanlift products](#)**SL 190**[technical info](#)[Back](#)**Scanlift SL 190**

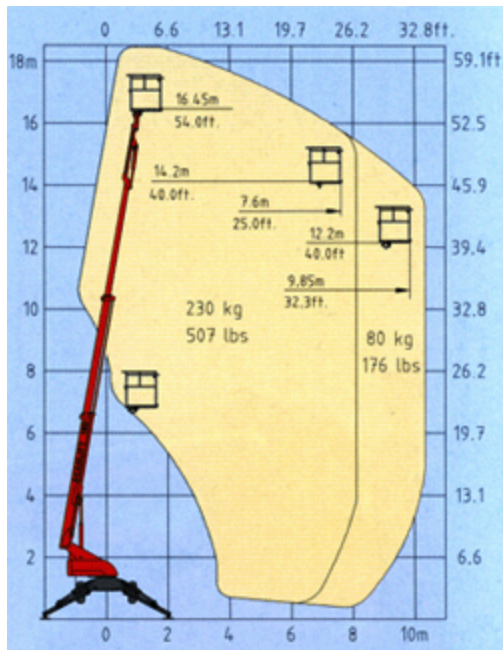
Scanlift SL 190 is replacing the SL 185. The SL 190 has fully hydraulic operations and a new type of engine and therefore more power and traction. There are also many improved details which make this firm and fully-hydraulic machine for a highly profitable investment. For instance SL 190 has brakes in every wheel.

Products

Scanlift products

SL 190

technical info

[Back](#)


Scanlift SL 190

Height

Working Height 18,45 m

Platform Height 16,45 m

Dimensions

Transport length 6,30 m

Transport width 1,92 m

Transport height 2,15 m

Platform dimensions 1,0 m x 1,5 m

Wheel Base 2,38 m

Support width 3,9 m

Work specifications

Boom Type Telescoping Jib/Fly

Boom Construction Steel

Platform Capacity 230 kg

Lift Radius @ 230 kg/507 lbs 8,1 m

Lift Radius @ 120 kg/264 lbs 9,65 m

Lift Radius @ 80 kg/176 lbs 10,35 m

Cage Swing, Side-to-side 90°

Turning Radius to tire side 3 m

- to platform outer side 5 m

Boom Rotation 360° Continuous

Ground Clearance 0,38 m

Gradeability 35 %/16°

Operating speed

Fast 3,6 km/h

Power train & capacities

Standard features 4 WD, max pulling power 15.400 N, 2 WS, 4

WS, Crab Steer, Oscillating Axle, Hydraulic

	Platform Rotation, 12 V Battery Operated Emergency Pump	
Drive system	Hydraulic 4 WD, 2 speed	
Engine options		
Kohler Command Gasoline/LPG	14.9 kW/ 20.0 hp	2 Cyl Air- Cooled
Lombardini Diesel	16.8 kW/ 22.8 hp	3 Cyl Water- Cooled
Fuel capacity	68 L	
Control System	Hydraulic Powered Stepless Motion	
Brakes	Hydraulic Disc, Spring Applied, Hydraulic Pressure Release	
Battery	12 VDC 75 Ah	
Tire Size (Standard)	10/75 - 15.3	Optional Sizes Available
Shipping weight		
Gasoline/Diesel	3080/3130 kg	6657/6767 lbs
All details are subject to change without notice. Listed values without obligation.		



Scanlift SL 240

With a total weight of only 4300 kg (9470 lbs) and a working height reaching up to 24,0 m (79 ft) the Scanlift SL 240 is light enough to be driven on floors without any risk of damage. It will not harm lawns or sink in sand and is easily moved from one location to another. All functions are easily controlled from the basket.

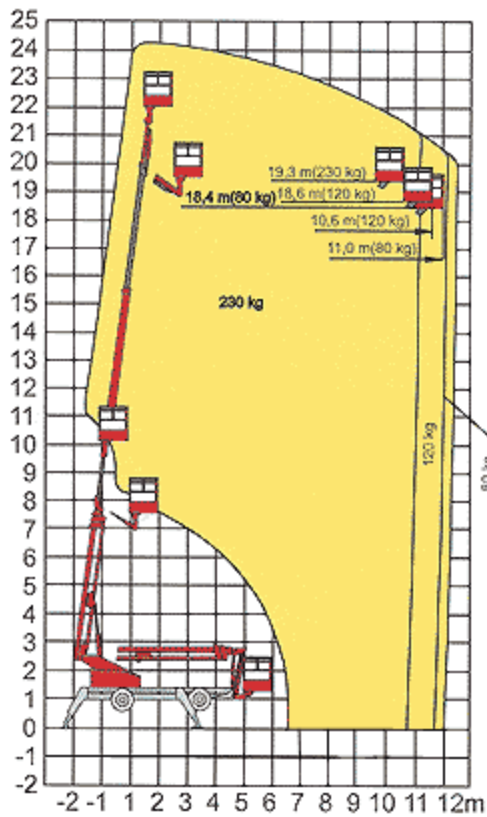
Products

Scanlift products

SL 240

↓
technical info

Back

Products
[Scanlift products](#)
[SL 240](#)
[technical info](#)
[Back](#)

Scanlift SL 240
Height

Working Height 24,0 m 79 ft.

Platform Height 22,0 m 72 ft.

Dimensions

Transport length 6,9 m 22,60 ft

Transport width 1,92 m 6,30 ft.

Transport height 2,25 m 7,38 ft.

Platform dimensions 1,0 m x 1,5 m 3,3 x 4,9 ft.

Wheel Base 2,76 m 9,1 ft.

Support width 4,5 m 177 in.

Work specifications

Boom Type Telescoping with flyjib

Boom Construction Steel

Platform Capacity 230 kg 507 lbs

Lift Radius @ 230 kg/507 lbs 9,6 m 31,5 ft.

Lift Radius @ 120 kg/264 lbs 10,6 m 34,8 ft.

Lift Radius @ 80 kg/176 lbs 11,0 m 36,1 ft.

Cage Swing, Side-to-side 90° 90°

Turning Radius to tire side 3,0 m 9,8 ft. inside

- to platform outer side 5,0 m 16,4 ft.

Boom Rotation 360° Continuous

Ground Clearance 0,42 m 1,4 ft.

Gradeability	19 / 35%	
Operating speed		
Fast	3,6 km/h	2,2 MPH
Power train & capacities		
Standard features	4 WD, 2 WS, 4 WS, Crab Steer, Oscillating Axle, Hydraulic Platform Rotation, 12 V Battery Operated Emergency Pump	
Engine options		
Kohler Command Gasoline/LPG	18,6 kW / 25,0 hp	2 Cyl Air-Cooled
Kubota Diesel	17,6 kW / 23,3 hp	3 Cyl Water-Cooled
Fuel capacity		
Liquid Propane Gas	9.2 kg	20 lb (Standard)
Gasoline	68 L	18 Gallon
Control System	Hydraulic Powered Stepless Motion	
Brakes	4 Hydraulic Discs, Spring Applied, Hydraulic Release	
Battery	12 VDC	
Tire Size (Standard)	10/75 - 15.3	Optional Sizes Available
Shipping weight		
Weight	4300/4365 kg	9471/9614 lbs.
Gasoline/Diesel		
All details are subject to change without notice. Listed values without obligation.		